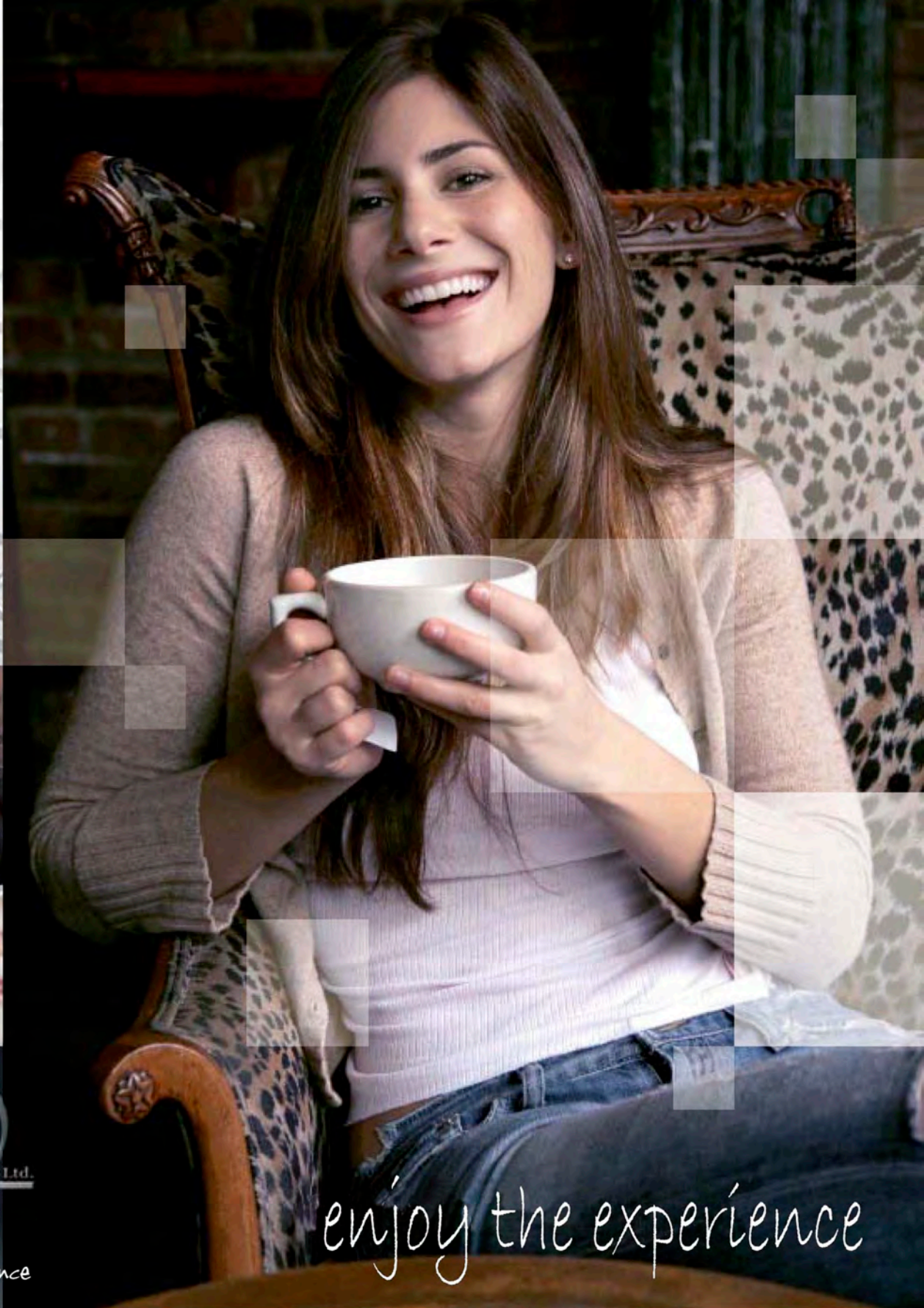




The
1066
auto

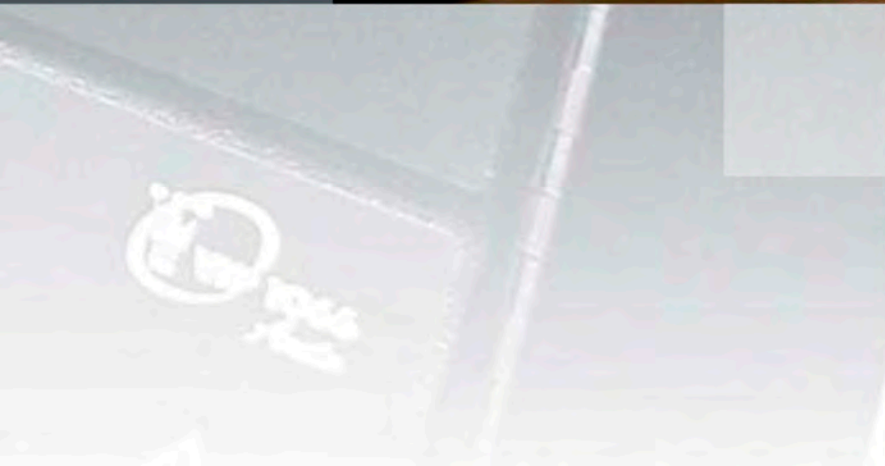


enjoy the experience



enjoy the experience

enjoy the experience



The 1066 auto

Perfect for the medium to busy site, the 1066 Auto provides an unrivalled choice of drinks for a machine of its size, and its high capacity means that it will keep going when others demand a refill.

Featuring a greatly enhanced choice of drink selections, together with an extremely simple and user-friendly selection system, the 1066 Auto offers the ultimate combination of choice, features and value for money.



1066 Auto shown with matching base cabinet



1066 Auto partnered with the WaterBoy rehydration station

DRINK SELECTION

This superb table top machine delivers a wide choice of 10 delicious In-Cup drink selections and despite its compact size has an astonishing capacity of over 650 cups!

An extremely convenient, electronically controlled internal sugar dispenser is also provided, allowing users to serve drinks perfectly matched to their own taste preference.





1066 Auto partnered with the SnackBreak MINI - the ideal "pick me up" station



1066 Auto partnered with the IceBreak can dispenser - a superb total refreshment solution

OTHER FEATURES

High security cup door mechanism

Hot water as standard, refrigerated cold water option available

Water selection can be programmed to provide free on demand, one touch automatic, or variable cup fill options.

Separate "part cup" hot water button to make stronger (espresso style) drinks.

Unique cup visibility panel - users can see what is going on inside.

Convenient integral stir stick dispenser.

Individual drink pricing.

High visibility digital credit display with full range of audit information.

The 1066 Auto by DarenthMJS provides an unrivalled choice of 10 drink selections, whilst its huge capacity is perfectly suited for medium to busy sites.

This simple to operate, extremely good looking machine is sure to delight all users time after time.



Unique high security cup door



Double hot water selections as standard plus optional cold water dispense



I-Key cashless payment system compatible

The
1066
auto



TOTAL DESIGN & MANUFACTURE

DRINKS MENU AND CAPACITY

Selections:

10 In-cup drinks + electronic sugar dispenser.
Optional refrigerated cold water system.

In-cup (73mm):

68 per selection = 680 cups total.

Sealed cups (73mm):

41 per selection = 410 cups total.

Sugar:

Please specify pre-packed bottle (1 ltr) or large refillable jar (1.8 ltr).

WATER REQUIREMENTS:

Mains water connection via 3/4" BSP fitting
(connection hose available).

Mains water pressure 1.5 - 10 bar (0.15 Mpa - 1Mpa).

Optional pumped water system (from storage vessel situated in base cabinet) ideal for occasional situations where a mains water supply cannot be provided.

COIN CONTROL

Available as either a free vend machine, with full electronic coin mechanism which accepts all coins plus token or with full change-giving facility.

High visibility digital display and accumulated credit feature allows multiple vends to be made.

Free vend master override switch.

I-Key cashless payment system compatible.

Electronic interface facility to host partner machines.

POWER REQUIREMENTS:

220-240 V, 50 Hz, single phase.

2.5 KW (2.7 KW with chiller), 13 A plug fuse.

Machine fitted with 1.6 metre mains lead.

OPTIONS

Matching base cabinet providing large (lockable) storage space together with convenient drink preparation area.

Chilled cold water dispense option.

High quality water filtration system for optimum drink quality.

Water booster pump for superior drink mixing.

IceBreak can dispenser offering five selections of *ice cold* cans.

SnackBreak MINI offering a wide choice of up to 32 snack, crisp, confectionery, PET bottle and healthy eating options.

Full sized SnackBreak offering up to 40 selections of snacks, crisps, confectionery and PET bottles plus an additional 4 selections of *ice cold* cans.

WaterBoy rehydration station serving extremely high quality Brita filtered, chilled or carbonated water.



DIMENSIONS (WxHxD):

Machine: 780mm x 930mm x 440mm

Cabinet (optional): 780mm x 950mm x 620mm

Machine & Cabinet: 780mm x 1880mm x 620mm

WEIGHT:

Machine: 59Kg Cabinet: 32Kg

Machine (with optional water chiller): 70Kg

For further information and advice on the extensive range of total refreshment solutions manufactured by DarenthMJS Limited, please contact your local authorised dealer.



DarenthMJS recommend and supply the complete range of EVERPURE water filtration technology.



DarenthMJS Ltd have a policy of continual improvement and reserve the right to modify and/ or change specifications without notice.

All dimensions and capacities shown are approximate and for guidance only. E & OE.

